

# KD51

## Residential door.

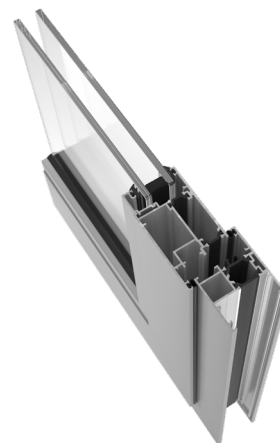
Make an entrance to your home with a KD51 aluminium entrance door. Our aluminium rebated thermal doors create a beautiful entrance to match the style of your home perfectly.

Aluminium doors offer strength and durability and are highly resistant to corrosion for years of trouble-free use and operation. The natural strength of aluminium gives you beautiful sleek lines, less frame and more glass area.



### Features

- Inward & outward open application available
- 28 mm glass as standard as well as a wide variety of other options
- Joined using mechanical corner cleats
- 75 mm polyamide sub frame section for easy to install modular doors
- Doors easily integrated with EBS window systems
- Cills, add ons, curtain walling insert & coupler sections available
- Multipoint locking available for secure doors



# TECHNICAL FEATURES

## Design

KD51 is a thermally broken door suite which give confidence in the most demanding environments. This system has a fully rebated design with a double gasket seal to three sides and a double brush strip and threshold gasket seal.

## Features

Flexibility, adaptability and security are the basic characteristics of any entrance door. Giving a high level of security as standard, the 51 mm casement system is constructed as internally beaded with multipoint locking. With a choice of butt hinges, it allows flexibility to suit the project design intent.

## Benefits

KD51 Residential door is a thermally efficient system thanks to its polyamide with HOi options delivering superb thermal efficiency. The HOi version introduces foam strips to further improve thermal efficiency for higher specification projects.

## Possibilities

The thermal door sash is manufactured from one section. The sash section is supplied in 6,7 m to enable a 1100x2100 mm door to be easily manufactured from just one length providing minimal waste.



Maximum sash size	1100x2400 mm
Maximum weight	50 kg
Maximum glazing	32,8 mm
Polyamide	19 mm
U <sub>w</sub> value	1,5 W/m <sup>2</sup> K

